

HP Pump capacity:
P411 : 272 m³/h

ORV capacity:
E411 225.000 m³/h

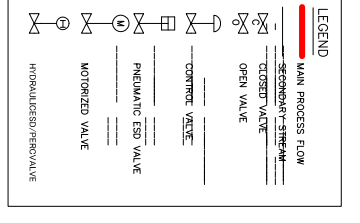
Recondenser capacity:
C401 : 900.000 m³/h
C421 : 900.000 m³/h

SW Pump capacity:
P751 : 5.000 m³/h
P752 : 5.000 m³/h

HP Pump capacity:
P421 : 420 m³/h

ORV capacity:
E421 225.000 m³/h

Metering capacity:
4 x 450.000 m³/h



NOTES:
1/100 CONNECTION

PROYECTOS A.C.E.
AS BUILT
Date: 01/11/2023

NO.	DATE	BY	CHKD.	REVISION	DESCRIPTION
1	15/07/2023	DM	DM	1	ISSUE FOR REVIEW
2	15/07/2023	DM	DM	2	ISSUE FOR REVIEW
3	15/07/2023	DM	DM	3	ISSUE FOR REVIEW
4	15/07/2023	DM	DM	4	ISSUE FOR REVIEW
5	15/07/2023	DM	DM	5	ISSUE FOR REVIEW
6	15/07/2023	DM	DM	6	ISSUE FOR REVIEW
7	15/07/2023	DM	DM	7	ISSUE FOR REVIEW
8	15/07/2023	DM	DM	8	ISSUE FOR REVIEW
9	15/07/2023	DM	DM	9	ISSUE FOR REVIEW
10	15/07/2023	DM	DM	10	ISSUE FOR REVIEW

REN
RENTAL Y SERVICIOS DE INGENIERIA S.A.
Sede: Av. Los Andes 1000, Quito, Ecuador
Tel: +593 9 910 0000

TGE
TERRACON CONSULTING S.A.
Sede: Av. Los Andes 1000, Quito, Ecuador
Tel: +593 9 910 0000

PROYECTOS A.C.E.
PROYECTOS A.C.E. S.A.
Sede: Av. Los Andes 1000, Quito, Ecuador
Tel: +593 9 910 0000

PEIS - Proyecto de Expansión de Terminal GNL de
PEK SENDOUT WITH SW UNLOADER
HP LNG PUMPS, VAPORIZER AND GAS SENDOUT
MO-GER-DIA-P-002