

# PRESS RELEASE

## ERSE launches digital tool to support consumers in purchasing fuels and bottled gas

ERSE – the Energy Services Regulatory Authority – today launched on its website the new [Fuel Dashboard](#), a digital tool that allows consumers, market participants and the general public to access detailed and up-to-date information on prices, markets and commercial offers for road fuels and bottled liquefied petroleum gas (LPG) in Portugal. The aim of this initiative is to strengthen market supervision and transparency, while also supporting consumers in their decision-making process when refuelling their vehicles or purchasing a gas bottle.

This digital tool was developed to facilitate the consultation and comparison of fuel and bottled gas prices. It also includes features that allow users to filter information by municipality and parish, ensuring the ability to quickly identify nearby fuel stations or bottled gas sales points, as well as gas bottles with compatible pressure regulators. In addition to geographical filters, the tool provides advanced price comparison options, selection of time periods, product typologies and historical analysis.

The information made available on the Dashboard is structured into two main areas, distinguishing between content aimed at **supporting consumer decision-making** when choosing where to refuel or purchase gas bottles, and content focused on **market supervision and enhancing transparency**. The price information presented on the Dashboard is based on data reported by operators of the National Petroleum System to the Energy One-Stop Shop and to the Directorate-General for Energy and Geology.

### Consumer decision support

Within the consumer decision support area, the following content is available:



## 1. Retail prices

Consultation of national average prices for road fuels and bottled LPG, differentiated by market segment (oil companies, low-cost operators and hypermarkets) and by fuel type (regular or premium).

## 2. Fuel stations and Bottled gas sales points

Geographical visualisation of fuel stations and bottled gas sales points, with filters by municipality and parish, allowing users to easily locate the most convenient and nearby locations relative to their place of residence, work or other point of interest.

Information is provided on the products sold at each fuel station, including the respective prices, updated twice daily, ensuring consumers have access to reliable information. The same information is available for bottled gas sales points, with weekly updates.

## 3. Commercial offers for bottled LPG (gas bottles)

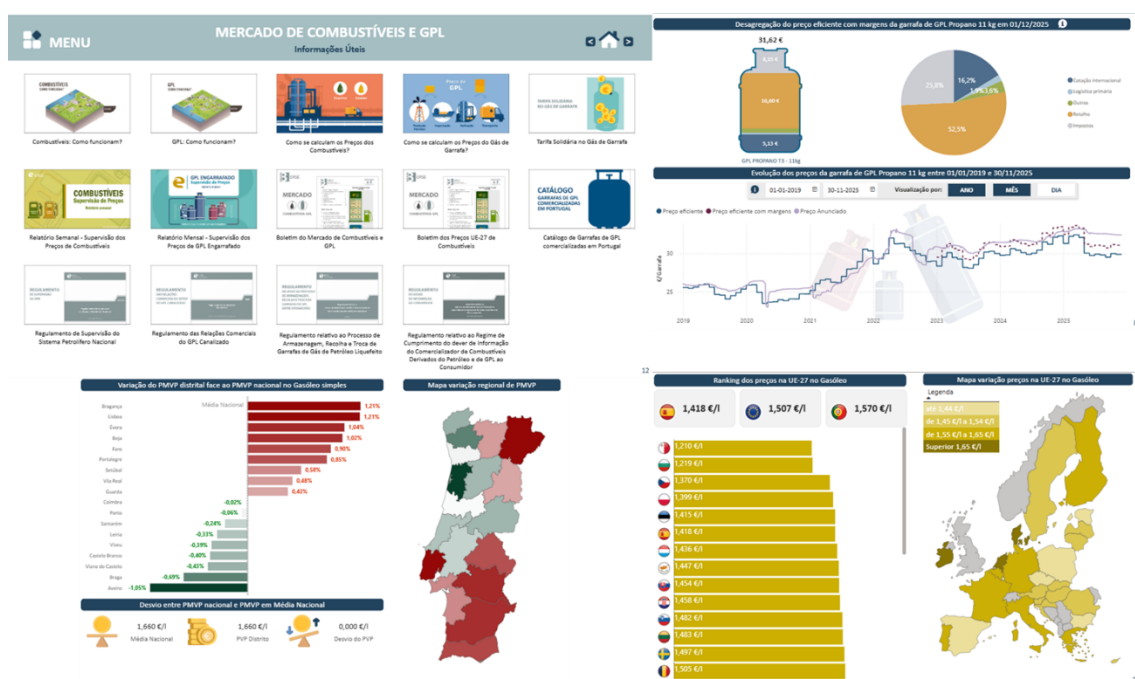
Comparative ranking of commercial offers by gas type (butane/propane) and bottle category (T3, T4, T5), expressed in euros per kilogram.

#### 4. Catalogue of commercialised Gas Bottles

A visual and interactive catalogue with filters by brand, gas type, bottle category and geographical area, allowing users to compare gas bottle models and verify regulator compatibility.

#### Market supervision and transparency enhancement

Within the market supervision and transparency area, the following content is available:



#### 5. International Oil and Petroleum Products Markets

Evolution of daily international quotations (Brent, WTI, petrol, diesel, jet fuel, automotive LPG, butane and propane), with the possibility of monthly and annual aggregation, and detailed explanatory information for the selected period. Historical data is available from January 2020 onwards.

#### 6. Efficient price of liquid fuels and bottled LPG

Consultation of the efficient price, with absolute and percentage breakdown of its components, with and without taxes and margins. Includes evolution of efficient prices, posted prices and prices after discounts.

## **7. Regional Price Variation of Fuels and Gas Bottles**

Monthly average prices by district for fuels and gas bottles, with comparison against the national average and historical data available from January 2018 onwards. This allows identifications of districts with the highest and lowest prices.

## **8. Fuel prices in the European Union**

Comparison of road fuel prices across the EU-27, including information on average retail prices, prices excluding taxes and tax burden, with historical data from January 2021 onwards. A ranking of countries with the highest and lowest prices is also provided.

## **9. Fuel consumption introductions in Portugal**

Monthly evolution of quantities of diesel, petrol, jet fuel and LPG introduced into the national market, with historical data available from January 2018 onwards.

## **10. Useful information**

Direct links to explanatory videos, supervision bulletins and reports, National Petroleum System regulations and information on the bottled gas social tariff.

By concentrating comprehensive data on prices, markets and the regulatory framework into a single digital tool, ERSE reinforces its role and ongoing commitment to communication strategies that promote energy literacy among citizens, by providing up-to-date and accessible information to consumers and market participants.

Lisbon, 19 December 2025